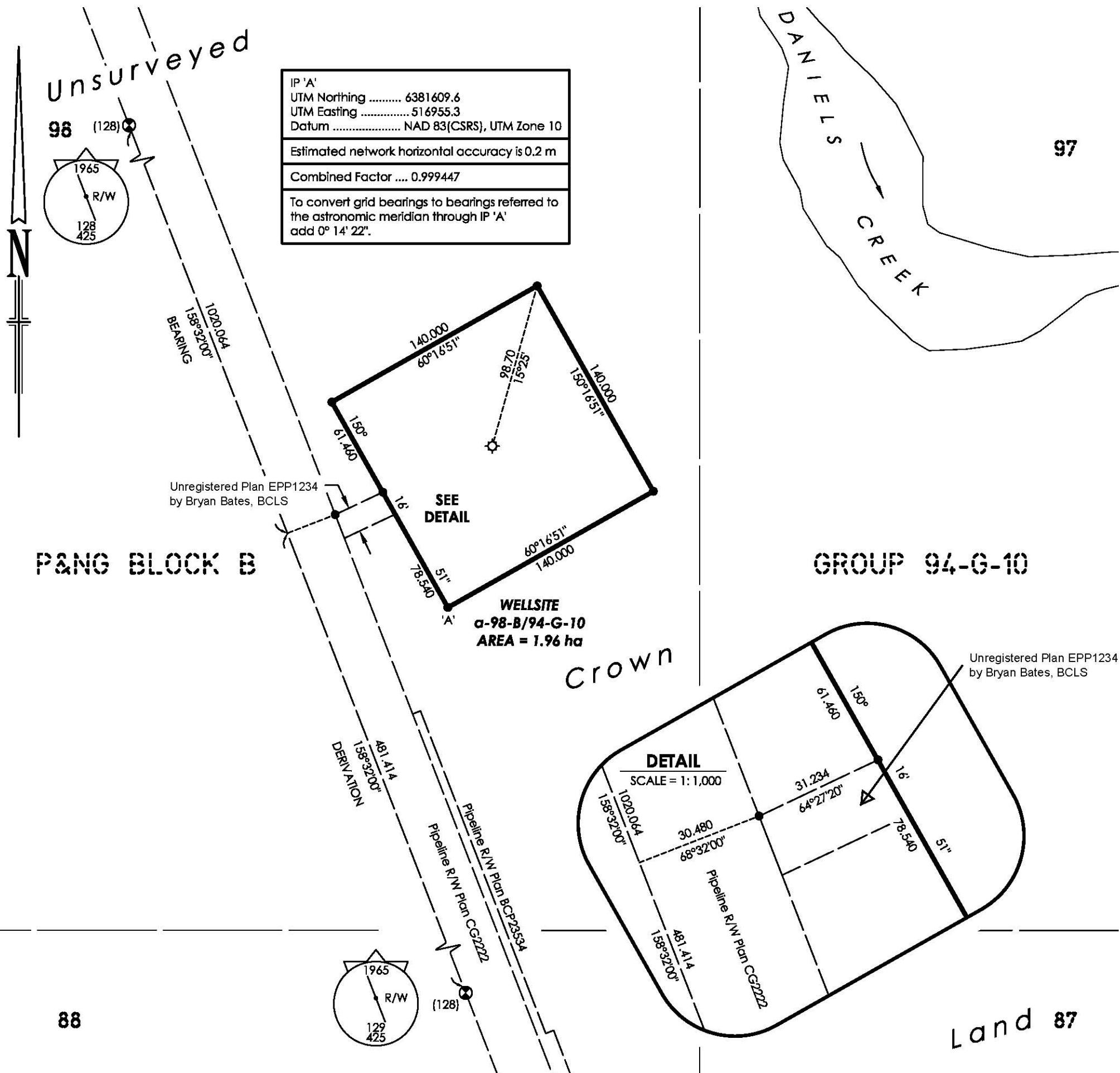


PLAN

EPP146



IP 'A'
 UTM Northing 6381609.6
 UTM Easting 516955.3
 Datum NAD 83(CSRS), UTM Zone 10
 Estimated network horizontal accuracy is 0.2 m
 Combined Factor 0.999447
 To convert grid bearings to bearings referred to the astronomic meridian through IP 'A' add 0° 14' 22".

LEGEND

FOUND PLACED

● Standard Iron Post
 ⊙ Wellhead

NOTES

Reference posts at all survey posts unless otherwise noted.
 All distances are in metres and decimals thereof unless otherwise noted.
 Grid bearings are referred to the central meridian of UTM Zone 10 (123rd meridian of West longitude) and are derived from GPS Observations. This plan shows horizontal ground-level distances based on a mean ellipsoidal elevation of 1004m. To compute grid distances, multiply ground-level distances by the mean combined factor of 0.999445.
 The UTM co-ordinates and estimated network horizontal accuracy are derived from GPS dual frequency baseline ties to Fort St. John ACP (GCM #981274).

BOOK OF REFERENCE

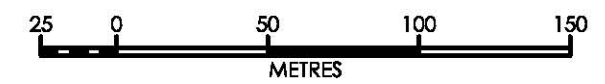
LOCATION	OGC No.	CLIENT FILE	DESCRIPTION	AREA
Unsurveyed Crown Land	9618129		WELLSITE α-98-B/94-G-10	Area = 1.96 ha
TOTAL				1.96 ha

DECLARATION

The field survey represented by this plan was completed by John Doe, BCLS on the 13th day of February, 2007.

--THIS PLAN LIES WITHIN THE PEACE RIVER REGIONAL DISTRICT--
ABC ENERGY LTD.

**PLAN OF STATUTORY
 RIGHT OF WAY
 IN
 UNSURVEYED CROWN LAND
 PEACE RIVER DISTRICT
 PURSUANT TO SEC. 113 OF THE LAND TITLE ACT
 BCGS 94G.057**



The intended plot size of this plan is 432mm in width by 280mm in height (use B size sheet) when plotted at a scale of 1 : 2,500

JOHN DOE LAND SURVEYING LTD.	FILE: ABCD
	CLIENT FILE:
DATE:	Drawn by:

P&NG BLOCK B

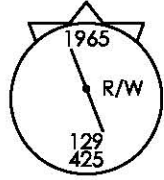
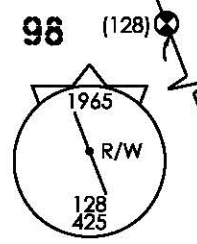
GROUP 94-G-10

Crown

Land 87

88

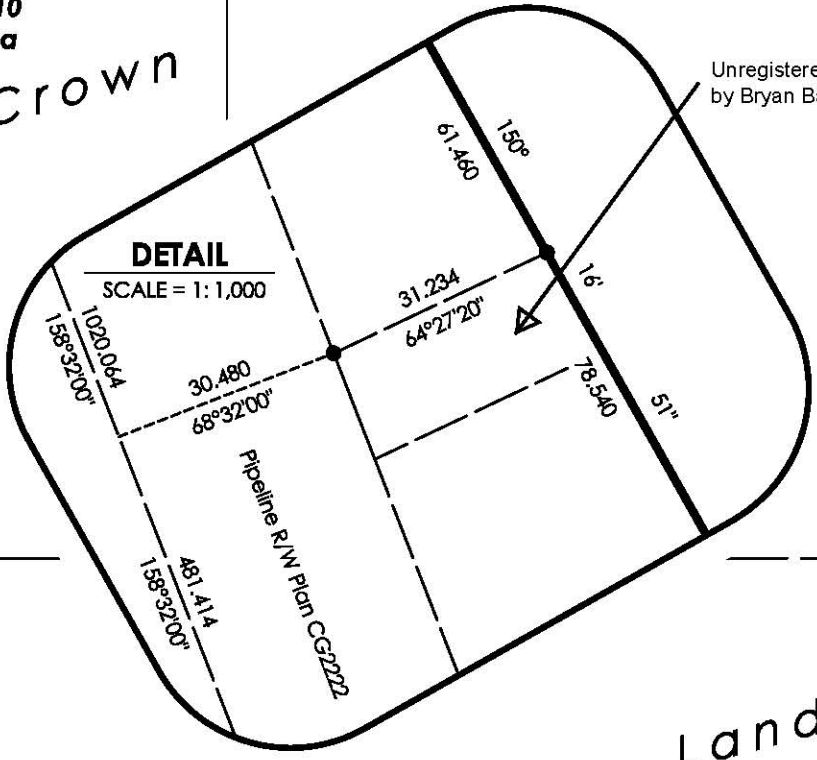
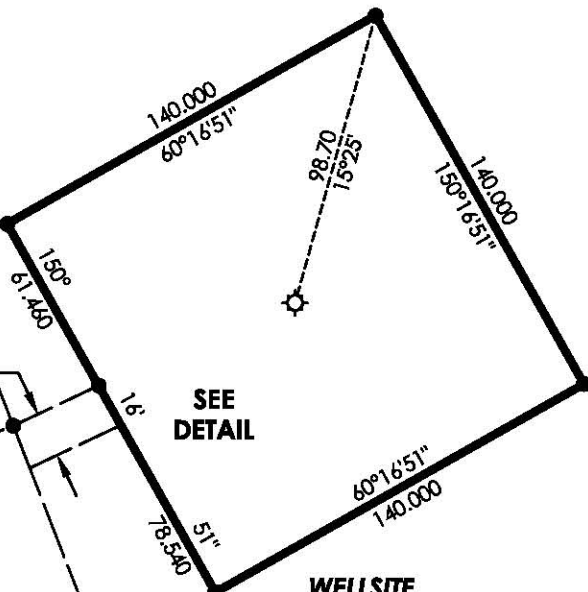
Unsurveyed



Unregistered Plan EPP1234
by Bryan Bates, BCLS

Unregistered Plan EPP1234
by Bryan Bates, BCLS

BEARING
158°32'00"
1020.064



DERIVATION
158°32'00"
481.414

Pipeline R/W Plan CG222Z
 Pipeline R/W Plan BCP2353A
 Pipeline R/W Plan CG222Z

DETAIL
SCALE = 1:1,000

SEE
DETAIL

WELLSITE
α-98-B/94-G-10
AREA = 1.96 ha

16'

61.460

150°

158°32'00"

1020.064

158°32'00"

481.414

158°32'00"

1020.064

158°32'00"

481.414

158°32'00"

1020.064

158°32'00"

481.414

158°32'00"

1020.064

158°32'00"

481.414

158°32'00"

1020.064

158°32'00"

481.414

158°32'00"

1020.064

158°32'00"

481.414

158°32'00"

1020.064

158°32'00"

481.414

158°32'00"

1020.064

158°32'00"

481.414

158°32'00"

1020.064

158°32'00"

481.414

158°32'00"

1020.064

158°32'00"

481.414

158°32'00"

1020.064

158°32'00"

481.414

158°32'00"

1020.064

158°32'00"

481.414

158°32'00"

1020.064

158°32'00"

481.414

158°32'00"

1020.064

158°32'00"

481.414

158°32'00"

1020.064

158°32'00"

481.414

158°32'00"

1020.064

158°32'00"

481.414

158°32'00"

1020.064

158°32'00"

481.414

158°32'00"

1020.064

158°32'00"

481.414

158°32'00"

1020.064

158°32'00"

481.414

158°32'00"

1020.064

158°32'00"

481.414

158°32'00"

1020.064

158°32'00"

481.414

158°32'00"

1020.064

158°32'00"

481.414

158°32'00"

1020.064

158°32'00"

481.414

158°32'00"

1020.064

158°32'00"

481.414

158°32'00"

1020.064

158°32'00"

481.414

158°32'00"

1020.064

158°32'00"

481.414

158°32'00"

1020.064

158°32'00"

481.414

158°32'00"

1020.064

158°32'00"

481.414

158°32'00"

1020.064

158°32'00"

481.414

158°32'00"

1020.064

158°32'00"

481.414

158°32'00"

1020.064

158°32'00"

481.414

158°32'00"

1020.064

158°32'00"

481.414

158°32'00"

1020.064

158°32'00"

481.414

158°32'00"

1020.064

158°32'00"

481.414

158°32'00"

1020.064

158°32'00"

481.414

158°32'00"

1020.064

158°32'00"

481.414

158°32'00"

1020.064

158°32'00"

481.414

158°32'00"

1020.064

158°32'00"

481.414

158°32'00"

1020.064

158°32'00"

481.414

158°32'00"

1020.064

158°32'00"

481.414

158°32'00"

1020.064

158°32'00"

481.414

158°32'00"

1020.064

158°32'00"

481.414

158°32'00"

1020.064

158°32'00"

481.414

158°32'00"

1020.064

158°32'00"

481.414

158°32'00"

1020.064

158°32'00"

481.414

158°32'00"

1020.064

158°32'00"

481.414

158°32'00"

1020.064

158°32'00"

481.414

158°32'00"

1020.064

158°32'00"

481.414

158°32'00"

1020.064

158°32'00"

481.414

158°32'00"

1020.064

158°32'00"

481.414

158°32'00"

1020.064

158°32'00"

481.414

158°32'00"

1020.064

158°32'00"

481.414

158°32'00"

1020.064

158°32'00"

481.414

158°32'00"

1020.0