

ALL COMMUNICATIONS SHOULD BE ADDRESSED TO THE  
DIRECTOR OF SURVEYS AND MAPPING  
THE REPLY TO THIS LETTER SHOULD BE MARKED  
FOR THE ATTENTION OF :



YOUR FILE NO.

Circular Letter #234

OUR FILE NO.

DIRECTOR AND SURVEYOR-GENERAL  
FIELD OPERATIONS DIVISION  
LEGAL SURVEYS DIVISION  
MAP PRODUCTION DIVISION

**SURVEYS AND MAPPING BRANCH**  
DEPARTMENT OF LANDS, FORESTS,  
AND WATER RESOURCES  
VICTORIA, BRITISH COLUMBIA

March 1, 1972.

CIRCULAR LETTER TO BRITISH COLUMBIA LAND SURVEYORS

Dear Sir:

The attached print is a tracing of part of Plan 762 of Lot 1921 Kootenay District, which created in this area, Lots 1 to 8 with an undesignated or unlabelled strip of land between the frontage of the lots facing Kootenay Lake, and the lake itself.

All subsequent subdivisions of Lots 1 to 8 of plan 762 have been draughted on the plan to show what has happened to the strip of Crown land and how various surveyors have handled the problem. More than 50% of the strip has been lost to the public and is now under Certificate of Title to private persons. Although it is possible the land could be recovered by the Crown it is not our intention to start proceedings in this case.

I would draw your attention to the case "re Quieting Titles Act, re certain lands in Osoyoos" appearing on page 133 of the Extracts from B. C. Law Reports as published by the Corporation of B. C. Land Surveyors. The circumstances of the two cases appear very similar and strengthen our conviction that this unlabelled strip, is Crown land.

The Director of Legal Services has advised his Registrars that in cases analagous to these two, no decision adversely affecting the Crown's ownership of a disputed strip be made without reference to this office.

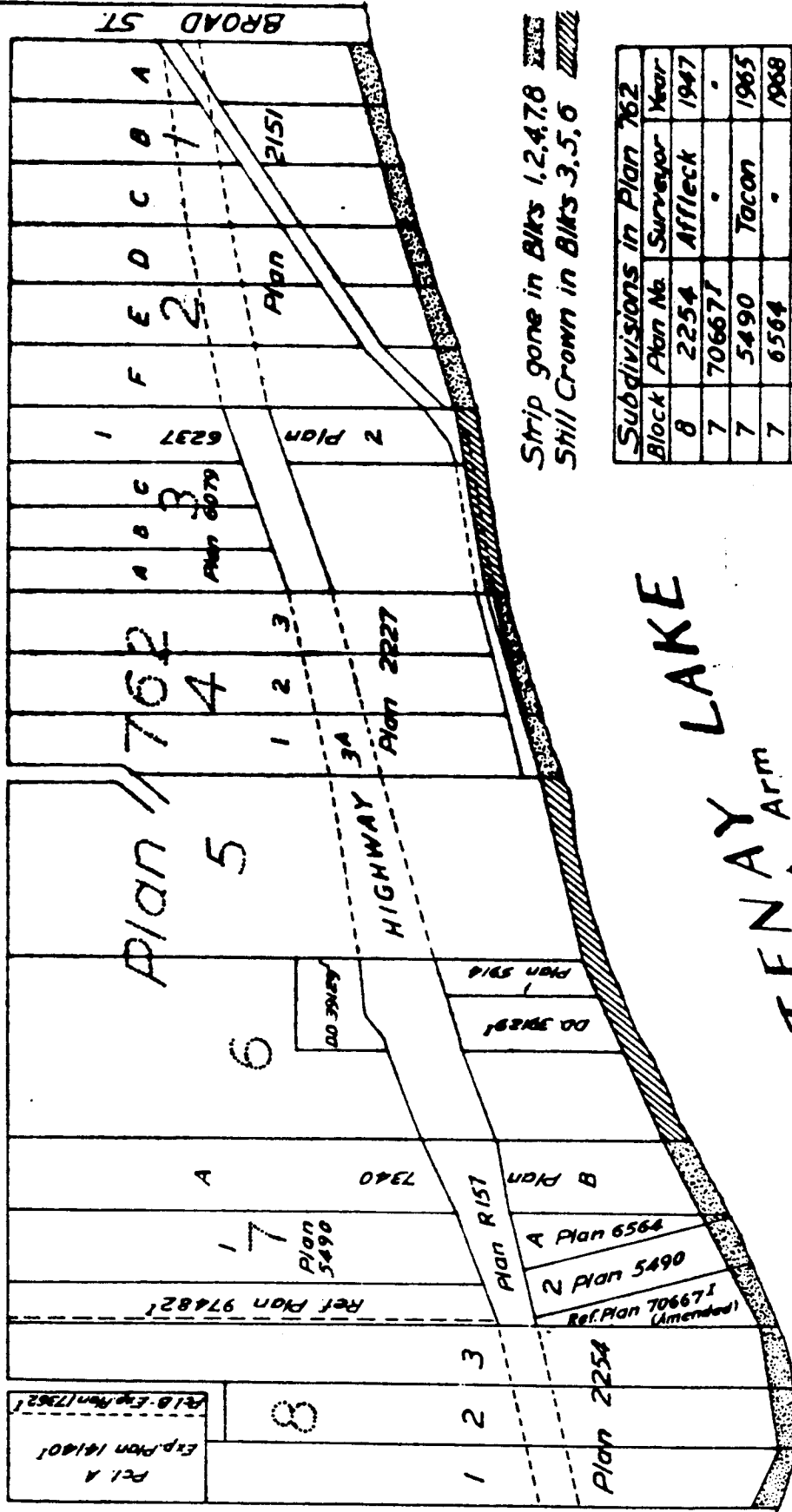
Yours truly,

A handwritten signature in dark ink, appearing to read 'A. H. Ralfs', with a long horizontal stroke extending to the right.

A. H. Ralfs,  
Surveyor-General and Director,  
Surveys and Mapping Branch.

Encl.

# LOT 192 KOOTENAY DIST.



Strip gone in Blks 1,2,4,7,8  
Still Crown in Blks 3,5,6

Subdivisions in Plan 762			
Block	Plan No.	Surveyor	Year
8	2254	Affleck	1947
7	706671	-	-
7	5490	Tacon	1965
7	6564	-	1968
7	7340	-	1970
6	5914	Boery	1966
4	2227	Purdy	1946
3	6237	Johnson	1967
182	2151	Purdy	1944

KOOTENAY LAKE  
KOOTENAY West Arm

Scale: 1 inch = 300 feet